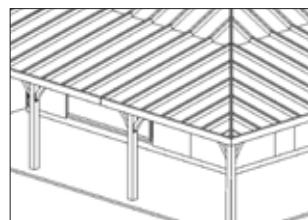
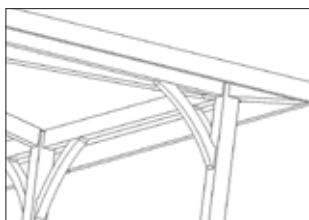
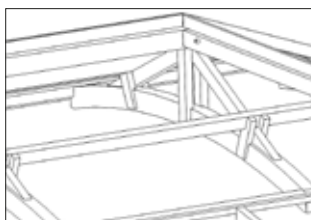
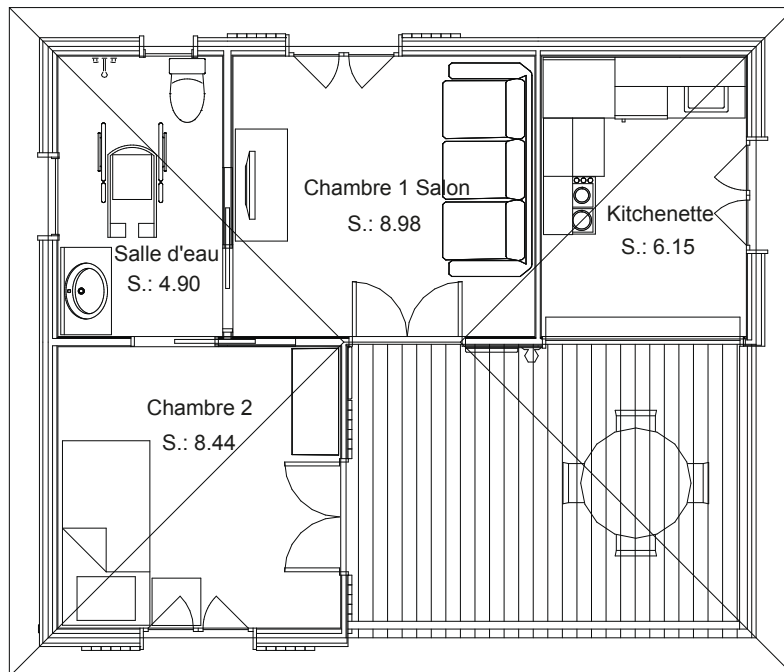


03 CALLIANDRA / BUMGALOW PMR Type T2 - PLAIN-PIED - SURFACE D'EMPRISE AU SOL : 47 m²

Toiture 4 pans, terrasse en L



PROGRAMMATION / SURFACE DE PLANCHER (TAXABLE) : 29 m² - SURFACE HABITABLE : 28,5 m²

◆ SALLE D'EAU / WC : 4,90 m²
◆ KITCHENETTE : 6,15 m²
◆ CHAMBRE / SEJOUR : 8,98 m²

◆ CHAMBRE 2 : 8,44 m²
◆ TERRASSE : 12,55 m²